

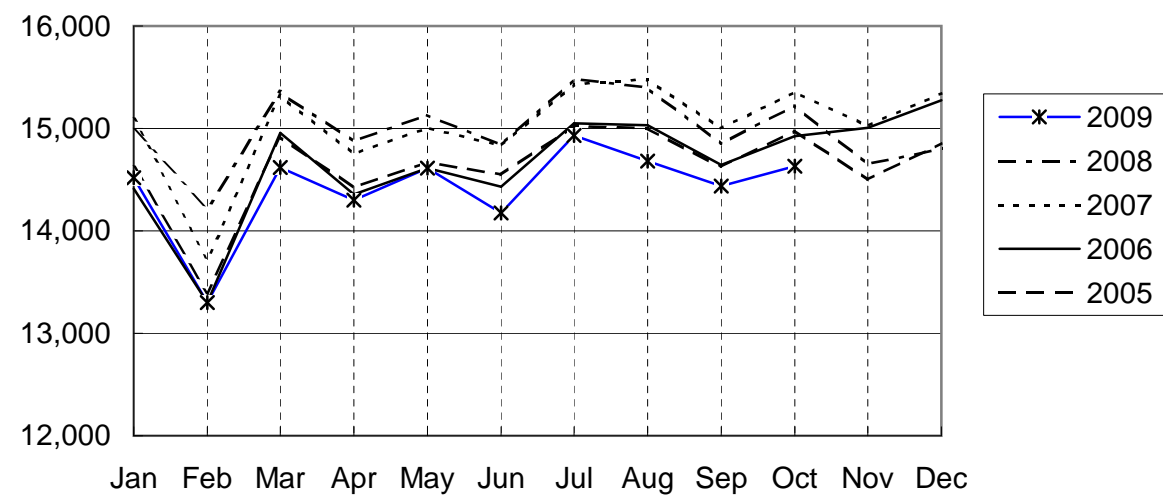
NARITA AIRPORT TRAFFIC STATISTICS -FY2008(APR.08-MAR.09)

NARITA INTERNATIONAL AIRPORT CORPORATION

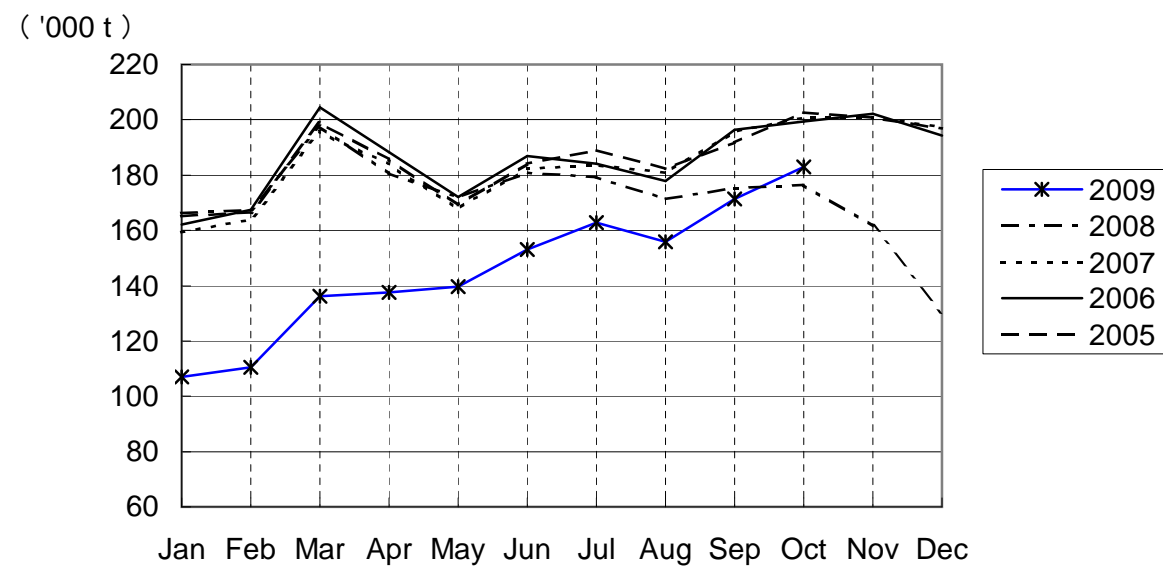
MONTH DESCRIPTION	AGGREGATE 21-May-78 ~31-Mar-09	2009						2010						TOTAL	AVERAGE PER DAY	AGGREGATE 21-May-78 ~31-MAR-10
		ACTUAL						PROV.								
		APR	MAY	JUN	JUL	AUG	SEP	OCT	NOV	DEC	JAN	FEB	MAR			
AIRCRAFT MOVEMENTS	3,728,751	15,455	15,838	15,341	16,132	15,870	15,584	15,854						110,074	514	3,838,825
		(97)	(97)	(96)	(97)	(96)	(98)	(97)						(97)		
A Runway	3,349,353	10,443	10,714	10,449	10,984	10,868	10,628	10,824						74,910	350	3,424,263
		(96)	(97)	(96)	(97)	(96)	(97)	(97)						(97)		
B'Runway	379,398	5,012	5,124	4,892	5,148	5,002	4,956	5,030						35,164	164	414,562
		(99)	(99)	(97)	(98)	(95)	(99)	(97)						(97)		
International	3,525,416	14,298	14,614	14,177	14,930	14,681	14,438	14,630						101,768	476	3,627,184
		(96)	(97)	(96)	(96)	(95)	(97)	(96)						(96)		
PAX Flight	2,910,368	12,272	12,690	12,168	12,804	12,825	12,388	12,493						87,640	410	2,998,008
		(99)	(99)	(98)	(98)	(98)	(98)	(97)						(98)		
Cargo Flight	553,161	1,872	1,749	1,900	1,979	1,736	1,884	1,922						13,042	61	566,203
		(83)	(84)	(85)	(87)	(84)	(91)	(90)						(86)		
Others	61,887	154	175	109	147	120	166	215						1,086	5	62,973
		(73)	(78)	(62)	(91)	(60)	(92)	(104)						(80)		
Domestic	203,335	1,157	1,224	1,164	1,202	1,189	1,146	1,224						8,306	39	211,641
		(107)	(108)	(104)	(105)	(104)	(104)	(106)						(105)		
PAX Flight	188,335	1,140	1,177	1,138	1,175	1,166	1,127	1,183						8,106	38	196,441
		(107)	(107)	(106)	(106)	(104)	(104)	(106)						(106)		
Others	15,000	17	47	26	27	23	19	41						200	1	15,200
		(68)	(121)	(63)	(84)	(96)	(79)	(100)						(88)		
TERMINAL PASSENGERS	710,491,595	2,560,726	2,360,115	2,351,690	2,878,640	3,110,137	2,916,168	2,833,831						19,011,307	88,838	729,502,902
		(96)	(87)	(85)	(97)	(102)	(106)	(101)						(96)		
International	685,802,077	2,464,788	2,268,741	2,262,286	2,769,614	2,994,284	2,803,131	2,719,106						18,281,950	85,430	704,084,027
		(96)	(86)	(84)	(97)	(101)	(105)	(101)						(96)		
Japanese	397,236,135	1,237,869	1,145,033	1,064,023	1,359,567	1,631,720	1,741,128	1,464,384						9,643,724	45,064	406,879,859
		(97)	(83)	(76)	(93)	(98)	(111)	(102)						(95)		
Non-Japanese	152,397,202	753,089	578,570	542,941	726,735	778,002	626,395	742,996						4,748,728	22,190	157,145,930
		(90)	(79)	(75)	(84)	(98)	(94)	(97)						(88)		
Transit	136,168,740	473,830	545,138	655,322	683,312	584,562	435,608	511,726						3,889,498	18,175	140,058,238
		(101)	(104)	(119)	(125)	(117)	(103)	(102)						(110)		
Domestic	24,689,518	95,938	91,374	89,404	109,026	115,853	113,037	114,725						729,357	3,408	25,418,875
		(107)	(96)	(93)	(109)	(114)	(126)	(122)						(109)		
CARGO (t)	42,692,332	137,604	139,566	153,141	162,885	155,841	171,370	182,917						1,103,324	5,156	43,795,656
		(76)	(81)	(85)	(91)	(91)	(98)	(104)						(89)		
Loaded	19,934,076	61,622	64,123	71,811	76,314	72,445	81,901	88,963						517,179	2,417	20,451,255
		(70)	(74)	(79)	(85)	(86)	(95)	(105)						(85)		
Export	14,540,630	43,100	43,955	48,577	52,008	50,699	59,731	66,286						364,356	1,703	14,904,986
		(64)	(67)	(71)	(79)	(83)	(94)	(105)						(80)		
Transit	5,393,446	18,522	20,168	23,234	24,306	21,746	22,170	22,677						152,823	714	5,546,269
		(86)	(99)	(101)	(103)	(94)	(97)	(106)						(98)		
Unloaded	22,758,256	75,982	75,443	81,330	86,571	83,396	89,469	93,954						586,145	2,739	23,344,401
		(83)	(88)	(91)	(96)	(96)	(101)	(102)						(94)		
Import	17,491,569	58,139	55,926	59,103	62,941	62,202	68,245	71,499						438,055	2,047	17,929,624
		(81)	(84)	(86)	(93)	(95)	(100)	(99)						(91)		
Transit	5,266,687	17,843	19,517	22,227	23,630	21,194	21,224	22,455						148,090	692	5,414,777
		(90)	(101)	(104)	(107)	(97)	(103)	(114)						(102)		
FUEL SUPPLIED	130,355,481	396,603	393,841	393,839	412,907	412,339	401,630	405,284						2,816,443	13,161	133,171,924
		(90)	(88)	(88)	(89)	(89)	(92)	(91)						(90)		

NOTE : ()% ; Changes from the same month of previous year.

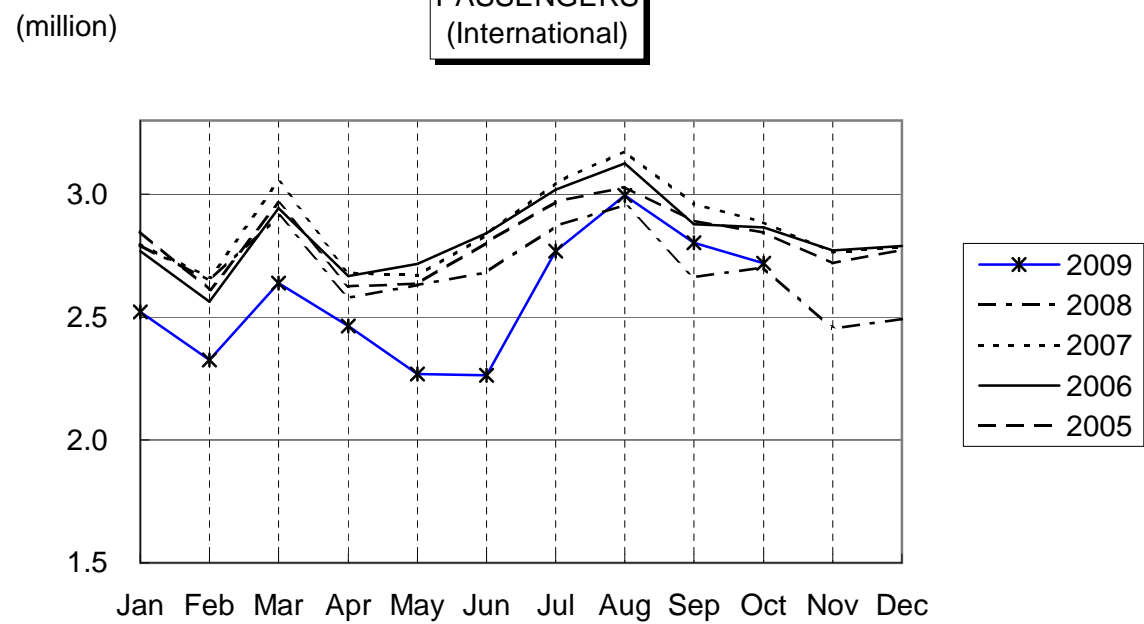
AIRCRAFT MOVEMENTS
(International)



CARGO
(International)



PASSENGERS
(International)



AVIATION FUEL SUPPLIED

